

AutoSPLITTER

ANGLE HEAD MODELS



OPERATIONS AND MAINTENANCE MANUAL

CONTENTS

INTRODUCTION.....	Page 3
WARNINGS AND SAFETY TIPS.....	Page 4
POWER REQUIREMENTS.....	Page 5
ASSEMBLY.....	Page 7
OPERATION.....	Page 11
MAINTENANCE.....	Page 13
TROUBLE SHOOTING.....	Page 14
PARTS LIST.....	Page 15
STRAIGHT HEAD MODEL CHART.....	Page 18
LIMITED WARRANTY.....	Page 19

INTRODUCTION

With the FASTORQ AutoSPLITTER you can safely cut through frozen nuts in just seconds. This is achieved by designing in the features listed below.

- ◆ **Adaptability:** AutoSPLITTERs are available with special nut adapters to allow you to split huck nuts, round nuts and 12-point hex nuts.
- ◆ **Versatility:** AutoSPLITTERs come in various sizes and models, including Straight Head Models, Angle Head Models and Double Cut Angle Head Models and each model can split multiple nut sizes.
- ◆ **Flexibility:** AutoSPLITTERs are designed to fit into the tightest spaces and because of our multiple model selection; we can find the right tool for your specific application.
- ◆ **Precision:** AutoSPLITTERs cutting chisels can be positioned so that only the nut is cut leaving the stud and threads unharmed.
- ◆ **Speed:** AutoSPLITTERs can be unpacked from its toolbox assembled and ready to use in less than five minutes and it only takes mere seconds to split a nut.
- ◆ **Safety:** AutoSPLITTERs do not use any sort of hammering or impact or flame to split nuts, as such no specialty permits are required for operation on the job.

WARNINGS AND SAFETY TIPS

****ALWAYS PREFORM A VISUAL INSPECTION OF ANY TOOL AND ITS ACCESSORIES BEFORE USE. NEVER ATTEMPT TO USE EXCESSIVELY WORN, BROKEN OR DULL TOOLS****



IS A CHANCE THAT OCCURS, EYE ENCOURAGED AT ALL SPLIT NUTS INTO ANY ORIGINAL SIZE.

KEEP ALL OBJECTS, OTHER THAN THE NUT BEING SPLIT, OUT OF THE TOOL. TOOL DAMAGE AND INJURY MAY OCCUR



WHEN SPLITTINGS METAL OBJECTS THERE DEBRIS MAY BE EJECTED AS THE SPLIT PROTECTION AND SAFETY GLOVES ARE TIMES WHILE IN OPERATION. DO NOT PIECES SMALLER THAT HALF THE NUTS



NEVER EXCEED 10,000 OPERATING AN AUTO-SPLITTER™.

DO NOT ALLOW THE HYDRAULIC HOSES TO KINK, TWIST, CURL OR BEND SO TIGHTLY THAT THE FLOW OF HYDRAULIC IS BLOCKED OR SLOWED IN ANY WAY.



PSI OF HYDRAULIC PRESSURE WHILE



NEVER ATTEMPT TO GRASP A PRESSURIZED HOSE THAT IS LEAKING.

POWER REQUIREMENTS

The AutoSPLITTER is hydraulically driven. All models require a hydraulic pump that delivers 10,000 PSI pressure. Exceeding 10,000 PSI pressure will void any and all warranties. Any type of hydraulic pump may be used to operate the AutoSPLITTER including air, electric, foot driven or hand driven pumps. Pumps can be purchased separately from FASTORQ and include all the necessary hoses and fittings, see the list below for appropriate pump and AutoSPLITTER combinations.

Available FASTORQ Hydraulic Pumps for The Straight Head AutoSPLITTER

Auto-Splitter Model	Available FATORQ Power Units						
	100-H Hand Driven	105-A Air Driven	150-H Hand Driven	150-F Foot Driven	205-A Air Driven	115-E Electric Driven	215-E Electric Driven
AS105AH	X	X					X
AS200AH	X	X	X	X	X	X	X
AS204AH	X	X	X	X	X	X	X
AS210AH	X	X	X	X	X	X	X
AS308AH			X	X	X	X	X
AS314AH			X	X	X	X	X
AS404AH						X	X
AS500AH						X	X
AS506AH						X	X
AS608AH						X	X

If a FASTORQ hydraulic pump is not used, refer to the chart listed below for the appropriate power requirements.

Pump Power Requirements for Non-FASTORQ Pumps

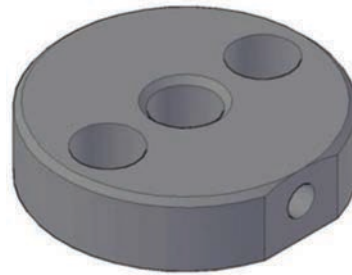
Angle Head Models	Valve Type	Hose Rating	Usable Minimum Capacity
AS105AH	2-Way	10,000 PSI	10 in ³
AS200AH	2-Way	10,000 PSI	10 in ³
AS204AH	2-Way	10,000 PSI	44 in ³
AS210AH	2-Way	10,000 PSI	44 in ³
AS308AH	2-Way	10,000 PSI	82 in ³
AS314AH	2-Way	10,000 PSI	82 in ³
AS404AH	3-Way	10,000 PSI	140 in ³
AS500AH	3-Way	10,000 PSI	140 in ³
AS506 AH	3-Way	10,000 PSI	140 in ³
AS608AH	3-Way	10,000 PSI	

ASSEMBLY

Within the AutoSPLITTER there are three “Model” types, they are the Straight Head Models, Angle Head Models and Angle Head Double Cutting™ Models. All three models share similar features of assembly but between the three models there are two different methods of holding the cutting chisels. See the illustration below.



Type 1



Type 2

The assembly instructions are separated based on the chisel holder types. Section 1 assembly shall cover all assemblies involving the “Type 1” chisel holder and Section 2 shall cover all assemblies involving the “Type 2” chisel holders.

Section 1 – Assembly instructions for “Type 1” Chisel Holders

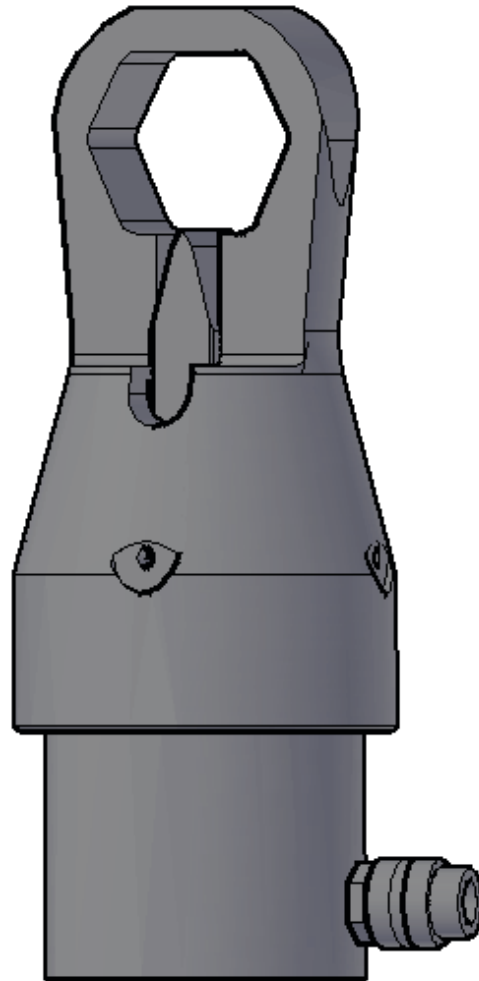
1. Unscrew the chisel holder from the cylinder.
2. Place the knobbed end of the cutting chisel into the center hole of the chisel holder.
3. Insert the set screw into the threaded side hole of the chisel holder. Do not over tighten the set screw, it is provided to hold the cutting chisel inside the chisel holder only, the cutting chisel should be loose enough to spin with minimal friction inside the chisel holder but not fall out.
4. Place the appropriate space for the nut you are cutting inside the cylinder. The spacer shall be placed inside the cylinder in such a way that the engraved side can be read. Only one spacer is required to split a nut. Never split a nut with more than one spacer installed at a time, doing so will damage the stud threads.
5. Screw the chisel holder and chisel assembly from Step 3 into the cylinder until it is seated firmly and bottomed out in the cylinder.
6. Connect the cylinder and pump together via 10,000 PSI hydraulic hose.
7. Pressure up the cylinder until the internal piston has been fully extended from the cylinder. Hold the pressure so that the piston stays in this extended position.
8. Place the AutoSPLITTER housing on the threaded end of the cylinder and screw the housing onto the cylinder. Screw the housing all the way onto the cylinder until it is seated firmly and bottomed out on the cylinder. Once the housing has been seated firmly and bottomed out on the cylinder, unscrew the housing one full turn.
9. Insert the set screw into the threaded side hole of the housing and tighten to secure it into place.
10. Release the held pressure on the cylinder to allow the piston to retract back into the cylinder.
11. Your AutoSPLITTER is now fully assembled and ready for use.

Section 2 – Assembly instructions for “Type 2” Chisel Holders

1. Unbolt the chisel holder from the cylinder.
2. Place the knobbed end of the cutting chisel into the center hole of the chisel holder.
3. Insert the set screw into the threaded side hole of the chisel holder. Do not over tighten the set screw, it is provided to hold the cutting chisel inside the chisel holder only, the cutting chisel should be loose enough to spin with minimal friction inside the chisel holder but not fall out.
4. Place the appropriate spacer for the nut you are cutting inside the cylinder. The spacer shall be placed inside the cylinder in such a way that the engraved side can be read. Only one spacer is required to split a nut. Never split a nut with more than one spacer installed at a time, doing so will damage the stud threads.
5. Align the two bolt holes of the chisel holder and spacer assembly from Step 3 to the two threaded holes on the top of the piston on the cylinder and screw in the two bolts removed from Step 1. Tighten the two bolts until they are seated firmly in the cylinder. Some of the AutoSPLITTER models are packaged with two sets of bolts, this is to accommodate thicker spacers, if during assembly it is discovered that the two bolts are too short use the longer second set to firmly bolt the chisel holder assembly and spacer into the cylinder.
6. Connect the cylinder and pump together via 10,000 psi hydraulic hose.
7. Pressure up the cylinder until the internal piston has been fully extended from the cylinder. Hold the pressure so that the piston stays in this extended position.
8. Place the AutoSPLITTER housing on the threaded end of the cylinder and screw the housing onto the cylinder. Screw the housing all the way onto the cylinder until it is seated firmly and bottomed out on the cylinder. Once the housing has been seated firmly and bottomed out on the cylinder, unscrew the housing one full turn.
9. Insert the set screw into the threaded side hole of the housing and tighten to secure it into place.
10. Release the held pressure on the cylinder to allow the piston to retract back into the cylinder.
11. Your AutoSPLITTER is now fully assembled and ready for use.

Your completely assembled AutoSPLITTER should resemble the illustration the next page.

Assembled AutoSPLITTER

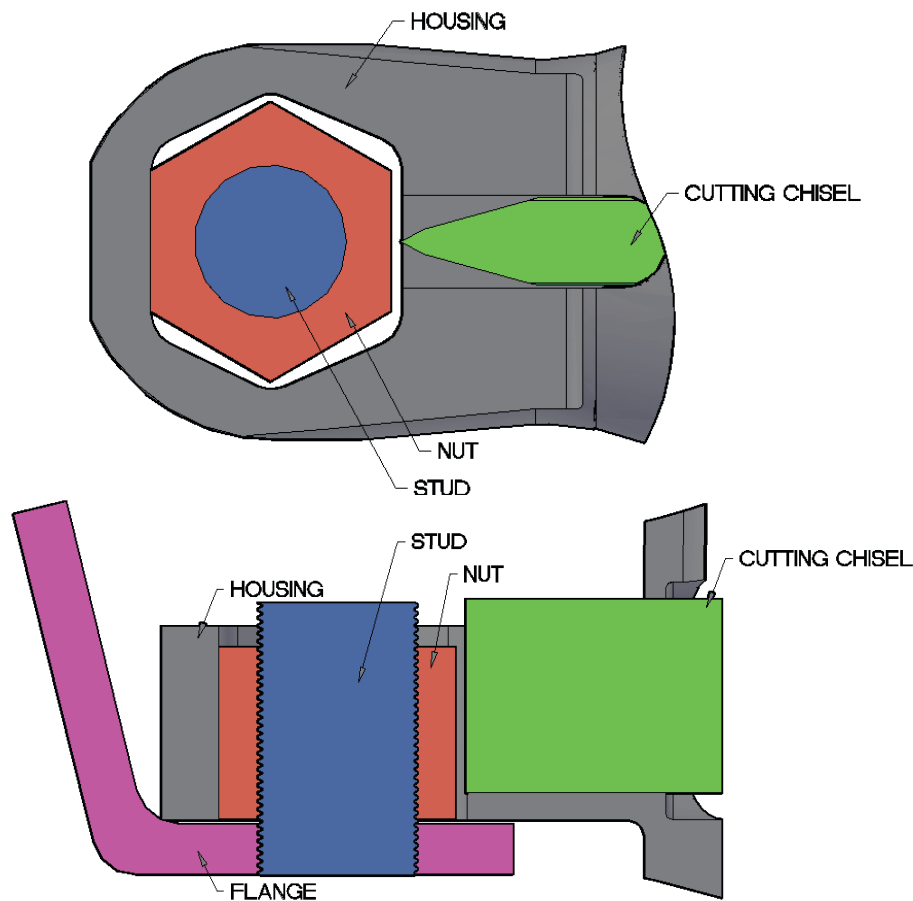


OPERATION

Note

*Before operation read and follow all warnings, safety tips and assembly instructions.

1. Lubricate the cutting edge of the chisel with an anti-seize lubricant before each split it attempted. FASTORQ 70+ lubricant is recommended and can be purchased separately.
2. Place the AutoSPLITTER over the nut to be split. Orientate the AutoSPLITTER in the exact position as illustrated below. The AutoSPLITTER should be parallel to the surface of the flange and the cutting chisel should be centered on a flat side of the nut being split. Refer to the illustration below for proper alignment.



PROPER PROFILE ORIENTATION

3. Pressurize the cylinder to extend the chisel slowly until the cutting edge makes contact with the flat nut face. Verify that the cutting edge is centered on the flat of the nut before continuing.

4. Continue to pressurize the cylinder slowly to begin splitting the nut. You will hear a loud pop; this noise indicates that the nut has been successfully split. Once you hear the loud pop, stop pressurizing the cylinder.
5. If the nut was frozen in place, once it has been split it should be freed enough to rotate the nut 180° to split the opposite flat on the nut for complete removal. If the nut cannot be rotated to access the opposite flat of the nut then reorient the AutoSPLITTER itself instead and repeat steps 1 thru 4.
6. Having two opposite flats faces of the nut successfully split, the nut should now be in two pieces and can easily be removed from the stud.

A successfully split nut should look like the illustration below.



MAINTENANCE

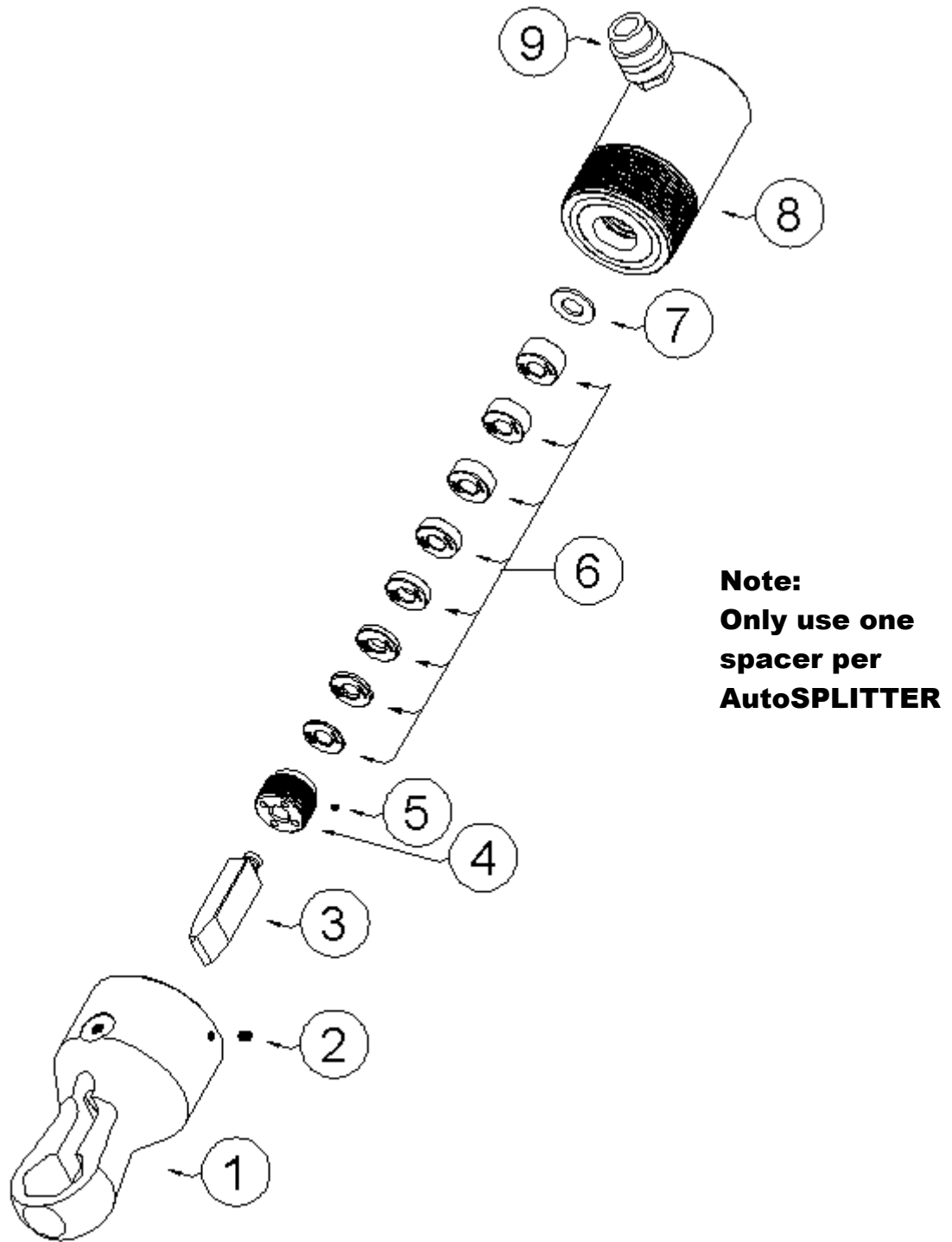
The FASTORQ AutoSPLITTER is designed to be a low maintenance tool. Following the steps below will help ensure a long useful shelf life of the tool for years to come.

- ◆ Always lubricate the cutting edge of the chisel with an anti-seize lubricant before each split it attempted. FASTORQ 70+ lubricant is recommended and can be purchased separately.
- ◆ Do not let the cutting chisel get dull. The cutting chisel can be re-sharpened by hand with a whetstone or on a bench grinder using a slow rpm and a fine ground wheel. Keeping the cutting chisel well lubricated and cool during sharpening will allow you to sharpen the cutting edge quickly and safely.
- ◆ After each use thoroughly clean the tool and its accessories before storage.
- ◆ Replace all thread protectors and dust covers on the tool when not in use or during storage. This will help keep any debris from entering the hydraulic system and keep the oil clean. And ready for use.
- ◆ For storage always keep your AutoSPLITTER in its supplied tool box. The supplied tool boxes have been manufactured to keep the tool and its accessories safe from any accidental damage and will increase the longevity of the tool.

TROUBLE SHOOTING

PROBLEM	POSSIBLE CAUSE	POSSIBLE SOLUTION
Cylinder does not hold pressure	<ol style="list-style-type: none"> 1. Cylinder seal is leaking. 2. Leaking fitting connection 3. Pump malfunction 	<ol style="list-style-type: none"> 1. Change cylinder 2. Tighten fitting connections 3. Change pump
Cylinder does not advance or only advances partially	<ol style="list-style-type: none"> 1. Pump release valve is open 2. Not enough fluid in pump 3. Air in hose lines 4. Couplers not tight 5. Pump reservoir too small 	<ol style="list-style-type: none"> 1. Close valve 2. Add fluid to pump 3. Bleed air from hose lines 4. Tighten couplers 5. Change pump to one with larger reservoir
Cylinder advances slowly	<ol style="list-style-type: none"> 1. Leaking fitting connection 2. Clogged fitting or hose 3. Loose coupler 4. Pump flow rate too slow 	<ol style="list-style-type: none"> 1. Tighten fitting connections 2. Change out fittings or hoses 3. Tighten couplers 4. Change pump to one with faster flow rate
Cylinder does not retract, retracts slowly or retracts partially	<ol style="list-style-type: none"> 1. Pump release valve closed 2. Coupler not fully closed 3. Clogged fitting or hose 4. Damaged retraction spring (AS314 Model Only) 5. Pump reservoir overfilled 	<ol style="list-style-type: none"> 1. Open valve 2. Close coupler 3. Change out fittings or hoses 4. Replace spring 5. Drain out excess fluid
Cutting chisel does not penetrate the nut	<ol style="list-style-type: none"> 1. Inadequate pump pressure 2. Incorrect spacer used 3. Cutting chisel edge dull 4. Housing not fully threaded onto cylinder 	<ol style="list-style-type: none"> 1. Increase pump pressure to 10,000 psi, MAX. 2. Change spacers 3. Sharpen or replace cutting chisel 4. Thread housing fully on cylinder as per assembly instructions
Cutting chisel splits the nut and damages the stud threads	<ol style="list-style-type: none"> 1. Incorrect spacer used 2. Housing threaded more than necessary 	<ol style="list-style-type: none"> 1. Change spacer 2. Thread housing fully on cylinder as per assembly instructions

PARTS LIST



"TYPE 1" STYLE CHISEL HOLDER MODELS

AutoSPLITTER Angle Head Model Numbers Parts List. Type 1 Auto-Splitters have externally threaded chisel holders with internal threads in the piston rod.

ITEM #	DESCRIPTION	AS100AH	AS105AH	AS200AH
1	HOUSING	D88045	B94084	B94061
2	HOUSING SET SCREW	SSN4-20	SSN4-20	SSN4-20
3	ALLEN WRENCH	WSS2	WSS2	WSS2
4	CHISEL	B88046	A94057	A94057
5	CHISEL HOLDER	A90002	B86215	B86215
6	SPACER SET	N/A	A99077	A99077
7	SET SCREW FOR CHISEL HOLDER	SSN04-20	SS#6-32	SS#6-32
8	ALLEN WRENCH FOR CHISEL HOLDER	N/A	WSS1	WSS1
9	HYDRAULIC CYLINDER	C-10	C-25	C-25
10	QUICK DISCONNECT FEMALE	C-604	C-604	C-604
11	TOOLBOX	25TB	25TB	25TB
12	TOOLBOX INSERT	25TBI	25TBI	25TBI

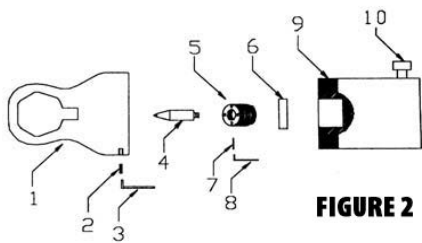


FIGURE 2

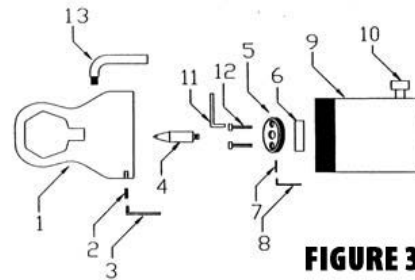
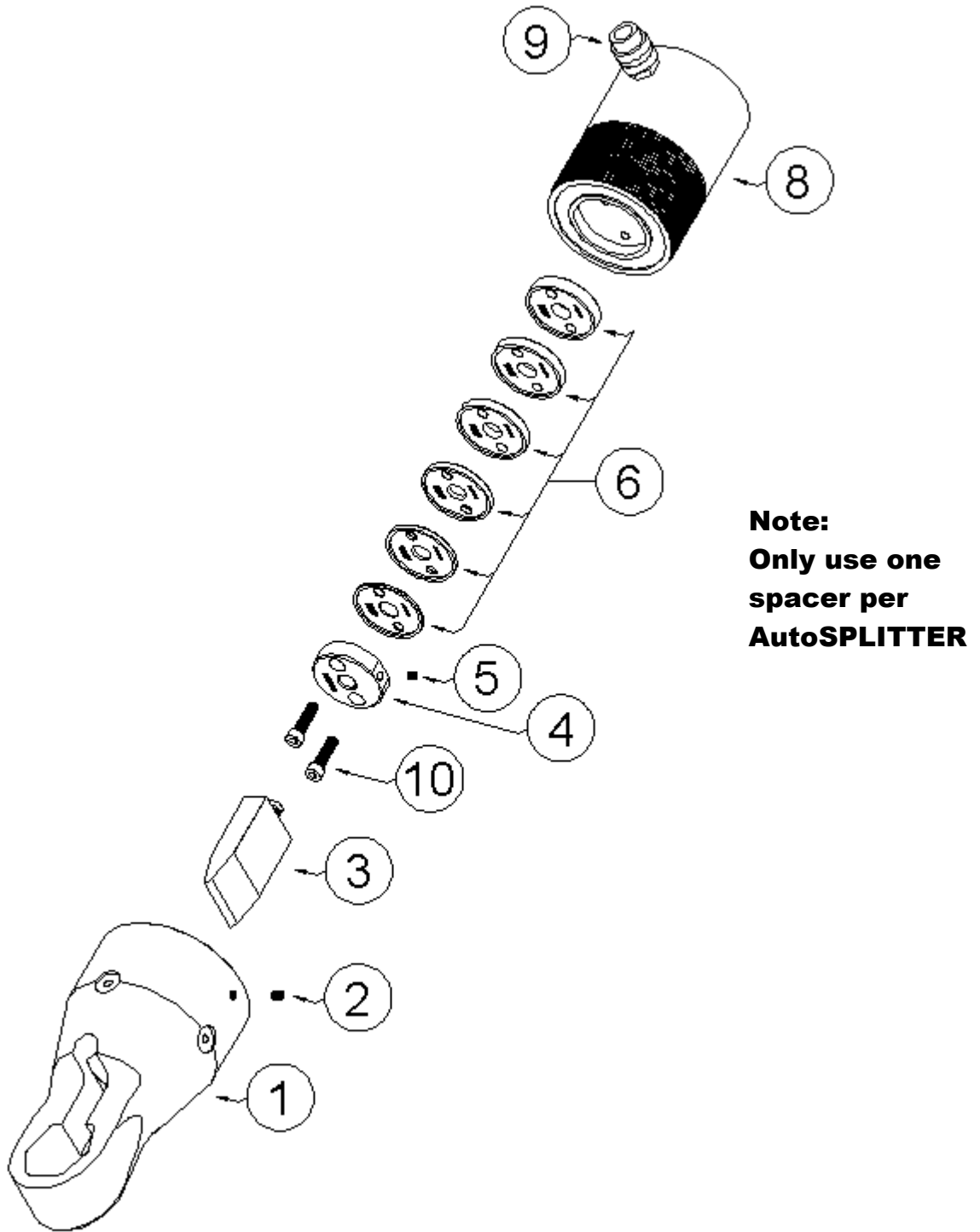


FIGURE 3

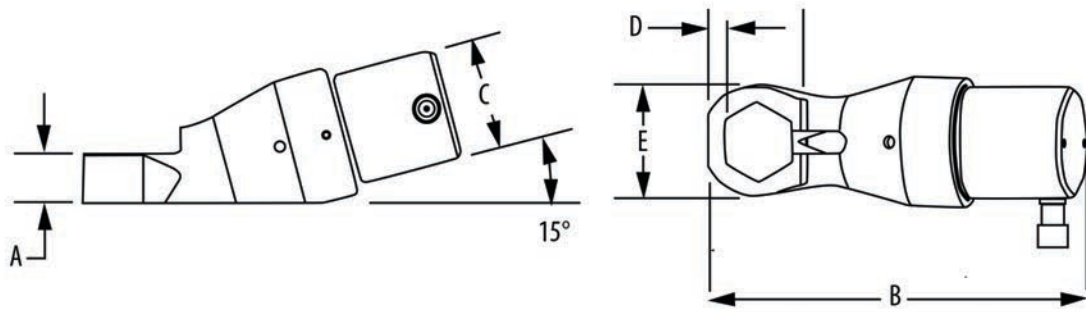
AutoSPLITTER Angle Head Model Numbers Parts List. Type 2 Auto-Splitters have a cylinder with threaded bolt holes in the piston rod and chisel holders that use socket head cap screws.

ITEM #	DESCRIPTION	AS204AH	AS210AH	AS308AH	AS314AH
1	HOUSING	B95107	A92027	B95109	A92028
2	SET SCREW	SSB6-16	SSB6-16	SSB6-16	SSB6-16
3	ALLEN WRENCH	WSS3	WSS3	WSS3	WSS3
4	CHISEL	A92031	A92031	A92032	A92032
5	CHISEL HOLDER	B87089	B87089	B87089	B87089
6	SPACER SET	A99001	A99001	A91001	A92034
7	SET SCREW FOR CHISEL HOLDER	SSN4-20	SSN4-20	SSN4-20	SSN4-20
8	ALLEN WRENCH FOR CHISEL HOLDER	WSS2	WSS2	WSS2	WSS2
9	HYDRAULIC CYLINDER	C-55	C-55	C-100	C-100
10	QUICK DISCONNECT FEMALE	C-604	C-604	C-604	C604
11	ALLEN WRENCH FOR CAP SCREWS	WSS5	WSS5	WSS5	WSS5
12	SOCKET HEAD CAP SCREWS	SHCS6-12 SHCS6-20	SHCS6-12 SHCS6-20	SHCS6-12 SHCS6-20	SHCS6-12 SHCS6-20
13	HANDLE FOR HOUSING	A92030	A92030	A92030	A92030
14	TOOLBOX	55TB	55TB	55TB	55TB
15	TOOLBOX INSERT	55TBI	55TBI	55TBI	55TBI



Note:
Only use one
spacer per
AutoSPLITTER

"TYPE 2" STYLE CHISEL HOLDER MODELS



AutoSPLITTER Dimensions

Angle Head Models

Duo Kit	Model	Stud Diameter inches (metric)	Nut Size ATF inches (mm)	A inches (mm)	B inches (mm)	C inches (mm)	D inches (mm)	E inches (mm)	F inches (mm)	Weight lb. (kg)
AS-DUO 25AH	AS105AH	5/16 - 7/8 (M8 - M22)	5/8 - 1-7/16 (16 - 36)	1.13 (29)	11.00 (280)	3.97 (101)	0.44 (12)	2.87 (73)	7.44 (189)	20.0 (9.1)
	AS200AH	7/8 - 1-1/4 (M22 - M33)	1-5/16 - 2 (36 - 55)	1.38 (35)	11.75 (299)	3.97 (101)	0.50 (13)	3.62 (92)	7.94 (202)	21.0 (9.5)
AS-DUO 55AH	AS204AH	1-1/4 - 1-1/2 (M33 - M39)	1-7/8 - 2-3/8 (50 - 60)	1.75 (45)	16.00 (409)	5.97 (152)	0.69 (18)	3.99 (102)	11.49 (292)	61.0 (27.7)
	AS210AH	1-3/8 - 1-3/4 (M36 - M45)	2-3/16 - 2-3/4 (60 - 75)	2.00 (51)	16.10 (409)	5.97 (152)	0.75 (20)	4.50 (115)	12.07 (307)	62.0 (28.1)
AS-DUO 100AH	AS308AH	1-3/4 - 2-1/4 (M45 - M56)	2-5/8 - 3-1/2 (70 - 90)	2.50 (64)	19.64 (499)	7.25 (185)	0.75 (20)	6.25 (159)	13.25 (337)	95.0 (43.1)
	AS314AH	2 - 2-1/2 (M52 - M64)	3 - 3-7/8 (80 - 100)	2.50 (64)	20.14 (512)	7.25 (185)	0.88 (23)	6.75 (172)	13.75 (450)	100.0 (45.4)



Warranty

All **AutoSPLITTER** models are covered by the FASTORQ NO B.S. Lifetime Guarantee Program. It's as simple as the name implies: any product covered by our No B.S. Lifetime Guarantee is covered for life. Period. Warranty includes seal replacement on cylinders.

The "fine print"

All products manufactured by FASTORQ are warranted against defects of material or workmanship for the period defined by product line/model from the date shipped when these products are used within the service, specification and pressure range for which they were designed and manufactured. Warranty programs vary in length of time of coverage by product line.

All products are potentially eligible for the Warranty Extension Program. Warranty programs are for customers in the U.S. and Canada but may be extended to customers in other countries under certain circumstances. Customers must complete online or mail-in product registration. Warranties do not cover loss or theft, abuse, misuse, overloading or alteration of product or components. Freight costs to deliver product to FASTORQ is the customer's responsibility; FASTORQ pays for the return shipping costs on warranty repairs/replacements. Repair or replacement will be determined by FASTORQ technicians.

Warranties are limited to repair or replacement of parts found by FASTORQ to be defective in material or workmanship and does not extend to claims for labor, expense, or other loss or damage occasioned by such defect of material or workmanship. No unauthorized back charges will be accepted. Warranties do not cover deterioration by corrosion, erosion, or any cause of failure other than defect of material or workmanship. Purchasers are expected to determine the suitability of FASTORQ products of their particular purposes. No other warranty, expressed or implied, will be allowed without the written agreement of FASTORQ. Any adjustments to this warranty must first be approved in writing by FASTORQ.