

ThinLINE Wrench

610A Power Unit

For best speed and performance we recommend powering ThinLINE wrenches with an AutoTORQ Power Unit.

Model 610A (shown) operates up to ten times faster than traditional torque wrench power units.

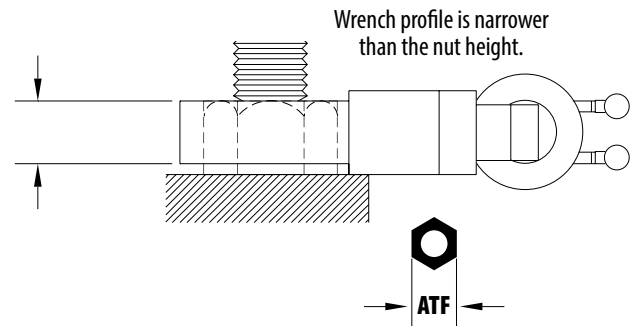
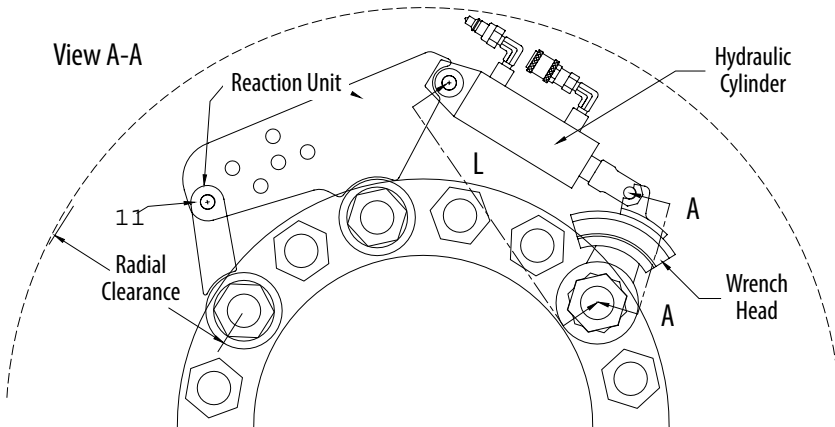
EXAMPLE SET:

Standard wrench sizes for model 200-6:

2-3/16" - 2-3/8" - 2-9/16"

2-3/4" - 2-15/16" - 3-1/8"

Each size includes a wrench head and reaction unit. All wrenches in this series use the 200-6 hydraulic cylinder.



Model	Color	Maximum Torque		Range of Bolt Sizes		Range of Nut Sizes - ATF		Radial Clearance	
		Ft. Lb. @ 5500 PSI	Nm @ 380 Bar	In	MM	In	MM	In	MM
150-4	Orange	3,240	4,406	3/4 - 1-1/4	19-32	1-1/4 - 2	32-51	9	228
200-6	Yellow	8,640	11,710	1-3/8 - 2	33-52	2-3/16 - 3-1/8	55-80	11	280
250-9	Green	20,250	27,450	1-7/8 - 3	48-85	2-5/16 - 4-5/8	75-120	14	365
325-12	Blue	41,840	56,730	2-3/4 - 3-1/2	70-89	4-1/2 - 5-3/8	110-135	20	500
325-18	Black	68,440	92,790	3-1/2 - 4 1/4	89-108	5-3/8 - 6-1/2	135-165	25	685
400-24	Black	138,230	187,410	4 - 5 1/4	102-133	6-1/8 - 8	135-210	30	762



AutoTORQ 10K Power Unit

MODEL 610A

Super high-speed hydraulic torque wrench pump suited for demanding turnaround and shutdown maintenance operations.

Features:

- 6 HP Air Motor
- Positive displacement reciprocating fluid end
- 10,000 psi Operation
- CIM Flow Data: 550 @ 0 psi; 380 @ 5,000 psi; & 150 @10,000 psi
- Precision Valve for torque and pressure control adjustment
- Glycerin filled easy to read pressure gauge
- Air Inlet filter, regulator, lubricator assembly
- 3-gallon hydraulic reservoir
- Spin-On 10-micron oil filter
- Oil Gauge
- Temperature Gauge
- Self Cooled
- Low maintenance
- Rugged
- Hand held 2-button remote control pendant with 25' color-coded lines
- All mounted on a 2-wheel mobile hand truck for maximum portability
- Optionally available mounted in a ridged steel frame
- Optionally available with 4 hydraulic ports for the simultaneous operation of up to 4 torque wrenches

Safety Features:

- If the button of the remote control is released or the remote control is dropped, the pump and torque wrench will come to an immediate stop
- Equipped with twin air exhaust valves

Air Requirement:

- Requires 150 cfm air volume @ 100 psi for optimum performance



Model 610A High Speed Pump

