

# ZipPULLER

## Subsea Hydraulic Flange Puller



*Largest Load Capacity Pulling System on the Market*

### Ideal for...

- **Subsea flange pulling and alignment**
- **Heavy Equipment Positioning & Maneuvering**

The largest load capacity pulling system on the market.

Versatility and a compact design allows the puller to fit a wide range of flange sizes.

The system utilizes a double acting hollow cylinder and a high tensile threaded draw bar, that passes through the hydraulic cylinder and the element to be pulled.

A multiple number of units can be used for desired load and a controlled, even pull.

### Features & Benefits

- Full Automatic Operation - the ZipNut® Double Zip® thread segments allow the puller to slide over the threaded rod during the retraction process, eliminating the time consuming task of tightening nuts and bolts
- All parts are stainless steel, nickel-plated or coated to provide corrosion protection
- Designed for use in multiple units with a single pump to provide uniform flange positioning
- 10,000 PSI working pressure
- Diver or remote operation
- ROV and Hardsuit compatible

### FASTORQ® ZipPULLER Flange Pullers are available in TWO STANDARD MODELS

**Model #FP3006Z104      30 Ton Capacity      6" Stroke**

**Model #FP6005Z114      60 Ton Capacity      5" Stroke**

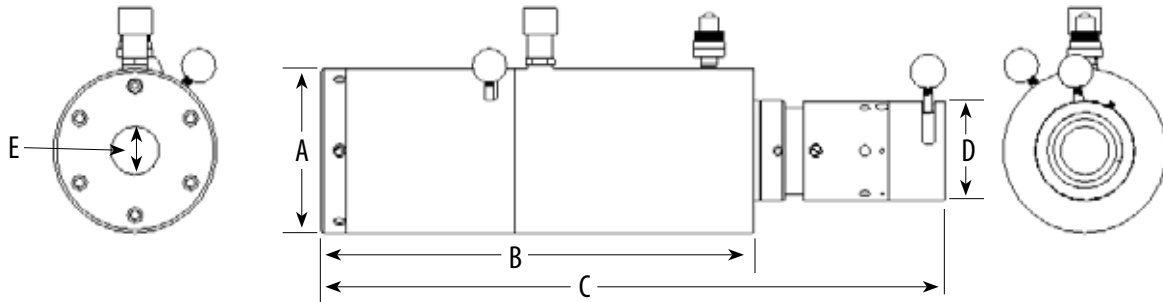
*Custom Configurations Available*



# ZipPULLER Subsea Hydraulic Flange Puller



## Technical Specifications



Model		A	B	C	D	E	Stroke	Weight	Pull Capacity
FP3006Z104	Imperial	4.75"	18.00"	25.00"	2.65"	1.30"	6.00"	65 Lb	30 Ton
	Metric	12.06 cm	45.72 cm	63.50 cm	6.71 cm	3.30 cm	15.24 cm	29.5 Kg	
FP6005Z114	Imperial	6.50"	17.25"	25.0"	4.00"	2.00"	5.00"	100 Lb	60 Ton
	Metric	16.51 cm	43.81 cm	63.50 cm	10.16 cm	5.08 cm	12.7 cm	45.3 Kg	

## Power Units

ZipPULLER Subsea Flange Pullers can be operated with portable, hydraulic 10,000 psi power units.

FASTORQ® Air Model 205A or Electric Model 215E will provide an ideal combination of pressure and flow.

Standard equipment includes filter, regulator, lubricator, fittings and safety locks on quick disconnects, pressure gauge, remote controlled hoses and hydraulic hoses.



Air Model 205A



Electric Model 215E

